



PRODUCT INFORMATION SHEET

Oshawa, ON

Phone: (905) 233 4225

Fax: (905) 233 4670

All hammocks that we import are made in North-East Brazil from 100% cotton or 100% nylon. The fabric sheet of the hammocks are made in looms (electric or manual), and the edging, fringes, ropes, ends and all other details are done by hand. For closer looks at the hammocks, please see our website (www.tropicalimports.ca)! ***Spreader bars are available as an option on most hammocks!*

LDH – Leopard Double Hammock



LDH: Leopard Double Hammock

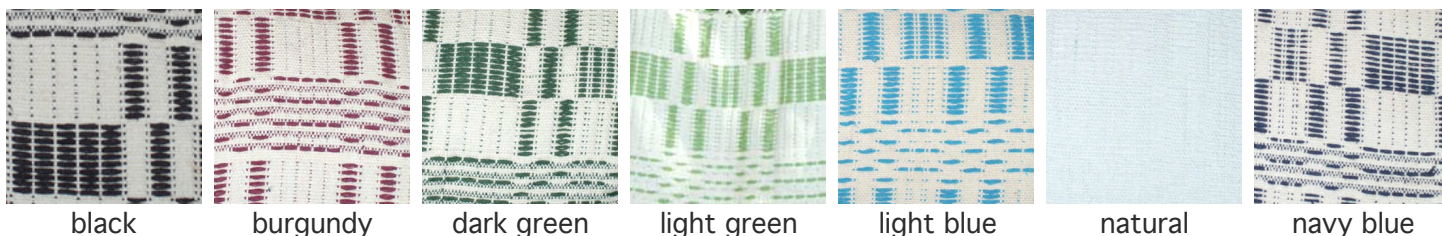
Details:	<i>metric</i>	<i>standard</i>
Wt. Capacity:	250 kg	551.3 lbs
Overall length:	420 cm	165.4 in
Body Length:	260 cm	102.4 in
Body Width:	160 cm	63.0 in
Ship Weight:	2.8 kg	6.2 lbs

The Leopard Double Hammock is long, wide, exceedingly strong and comfortable. The weave is natural white interlaced with one of a variety of alternate colours.

The weave a very strong 3 x 3 strand and is looser so this hammock is really body conforming for extreme comfort. The fringe on the LDH is crochet, making it one of the more attractive hammocks we have.

*Spreader Bars are available as an option

Pattern / colors / details / availability:



black

burgundy

dark green

light green

light blue

natural

navy blue